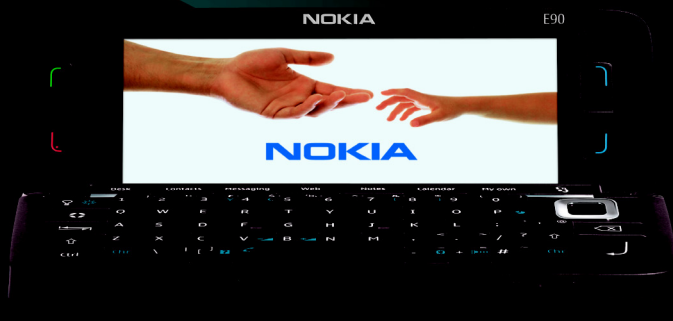


Printing guide



Nokia E90 Communicator

NOKIA
Eseries

Nokia E90 Communicator Printing guide

Legal Notice

Copyright © 2007 Nokia. All rights reserved.

Nokia, Nokia Connecting People, Eseries and E90 Communicator are trademarks or registered trademarks of Nokia Corporation. Other product and company names mentioned herein may be trademarks or tradenames of their respective owners.

Reproduction, transfer, distribution or storage of part or all of the contents in this document in any form without the prior written permission of Nokia is prohibited.

Nokia operates a policy of ongoing development. Nokia reserves the right to make changes and improvements to any of the products described in this document without prior notice.

To the maximum extent permitted by applicable law, under no circumstances shall Nokia or any of its licensors be responsible for any loss of data or income or any special, incidental, consequential or indirect damages howsoever caused.

The contents of this document are provided "as is". Except as required by applicable law, no warranties of any kind, either express or implied, including, but not limited to, the implied warranties of merchantability and fitness for a particular purpose, are made in relation to the accuracy, reliability or contents of this document. Nokia reserves the right to revise this document or withdraw it at any time without prior notice.

The availability of particular products and applications and services for these products may vary by region. Please check with your Nokia dealer for details, and availability of language options.

Contents

Introduction	4
Adding a printer	5
Printing	7
Troubleshooting	9
General	9
Printing with Bluetooth technology	9
Printing with wireless LAN technology.....	9

Introduction

Your Nokia E90 Communicator includes drivers for certain Hewlett-Packard printers, allowing you to print to compatible Hewlett-Packard printers. Printing to other Hewlett-Packard printer models, and printers of other manufacturers may not be possible.

You can use your Nokia E90 Communicator to print different kinds of items, such as documents, messages, images, and Web pages. This document shows how to print files through Bluetooth, infrared, and wireless LAN (WLAN) connections. Some files cannot be printed.


Adding a printer

You can change the printer settings of your Nokia E90 Communicator. For example, if you want to print high-quality photographs, you must set the quality mode and media type accordingly, and make sure that you use high-quality paper in your printer.



Note: These printer settings only apply when you use the *HP Mobile Printing* driver for printing.

To specify printer settings:

- 1 Select  > *Office* > *Printers*.
 - 2 Select *Options* > *Add*.
 - 3 Define the following details:
 - *Printer* – Enter a name of the printer.
 - *Driver* – Select a printer driver. There are two types of printer driver:
 - *HP Mobile Printing* – HP Mobile Printing driver for printing to Hewlett-Packard printers.
 - *General* – General printer driver with limited font support that may allow you to print text to other printers.
 - *Bearer* – Select how you connect to the printer. The available options are *Socket/HP JetDirect*, *Bluetooth*, *LPR*, *Infrared*, and *File*.
- *Access point* – Select *Easy WLAN* or an access point you have created for your WLAN. This setting is available only for the *LPR* and *Socket/HP JetDirect* connections.
 - *Host* – Enter IP address or DNS name of the printer. This setting is available only for the *LPR* and *Socket/HP JetDirect* connections.
 - *Port* – Enter a port number for the printer. This setting is available only for the *Socket/HP JetDirect* connection.
 - *User* – Enter the user name for the printer. This setting is available only for the *LPR* connection.
 - *Queue* – Enter the queue name for the printer. This setting is available only for the *LPR* connection.
 - *Orientation* – Select paper orientation (*Portrait* or *Landscape*).
 - *Paper size* – Select paper size. The default is *A4*.
 - *Quality mode* – Select the quality of the print. For fast printing with limited color reproduction, select *Draft*. For balance between printing speed and color quality, select *Normal*. For additional color quality, select *Best*. For printing images, use *Best*. To increase the quality of the printed images, also use high quality paper. Selecting *Best* increases the printing time significantly.

- *Media type* – Select the type of paper. To print images, use high-quality paper, and set the value to *Photo*.
- *Colour mode* – Select whether to print in color or grayscale.
- *Printer model* – Select a Hewlett-Packard printer model. If your printer model is not listed, select a similar model.



- 4 To save your changes, press *Back*.

Printing

You can print using different methods:

- Your Nokia E90 Communicator comes with a built-in Bluetooth adapter. If your printer includes a compatible Bluetooth adapter, you can use a Bluetooth connection to print items from your Nokia E90 Communicator.
- If your printer includes an infrared port, you can print items from your Nokia E90 Communicator by using an infrared connection.
- If you have access to a wireless LAN (WLAN) with a print server or a network printer that is accessible through your wireless connection, you can print items through a wireless connection.




Your Nokia E90 Communicator supports the LPR print protocol. For details on the protocols, refer to your printer documentation.

To use the LPR protocol, you need to know the following before printing:

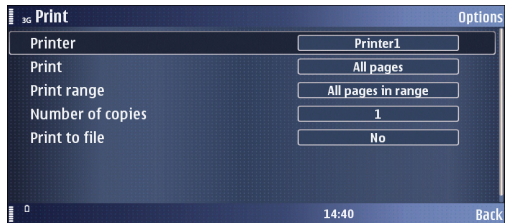
- The IP address or DNS name of the printer.
- The user name. This is only needed if the printer requires it.
- The queue name.

Refer to your printer documentation or contact your IT support for the necessary information. You can also print a configuration page from your printer, if your printer supports that option.

To print an item:

- 1 If necessary, activate a Bluetooth, infrared, or WLAN connection on your printer. For details, refer to your printer documentation.
- 2 Activate a connection on your Nokia E90 Communicator:
 - **Bluetooth** – Select  > **Connectivity** > **Bluetooth** and selecting **Bluetooth** > **On**. Make sure that your Nokia E90 Communicator is visible to all other devices with Bluetooth connectivity by selecting **My phone's visibility** > **Shown to all**.
 - **Infrared** – Select  > **Connectivity** > **Infrared**.
 - **LPR (WLAN)** – Select  > **Connectivity** > **WLAN wiz**. Select your network and then **Options** > **Define access point**.
- 3 On your device, open the item that you want to print. If you haven't already added a printer to your device, do it now as described in "Adding a printer" on page 5.
- 4 Select **Edit** or **Options** > **Printing options** > **Print**. Define the following print job settings:
 - **Printer** – Select your printer.
 - **Print** – Select whether to print all pages, or only odd or even pages.
 - **Print range** – Select from **All pages in range**, **Current page**, and **Defined pages**.
 - **Number of copies** – Enter the number of copies you want to print.

- *Print to file* – Select whether to print to a file instead of paper.



- 5 Select *Options > Print* to print the file.

Troubleshooting

General

If printing is interrupted or does not succeed:

- Check that you are still within the range of the device.
- Check that the number of simultaneous connections to the printer is not too high.

Printing with Bluetooth technology

If the search for devices with Bluetooth connectivity does not find the printer:

- Make sure that the printer supports Bluetooth wireless technology.
- Check that Bluetooth wireless technology is enabled on the printer.
- Check that the printer supports the Serial Port Profile (SSP).

If you cannot print through a Bluetooth connection:

- Check whether the printer requires pairing.
- Check whether the printer requires a password.

Printing with wireless LAN technology

If you cannot find the printer with an ad-hoc search:

- Check that the printer supports ad-hoc connections.

If you cannot print through LPR:

- Check that the printer supports the protocol that you want to use.
- Check that the connection from your device to the network is allowed.
- Check whether VPN is required.